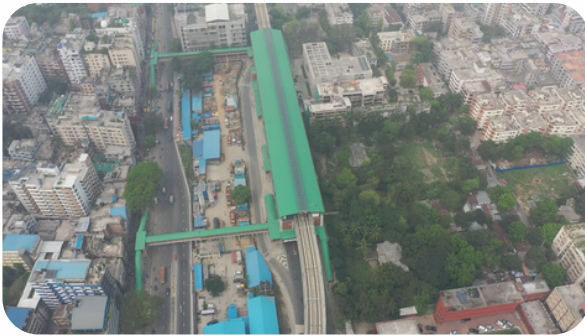




# BUETEN NEWSLETTER

## METRO IN DHAKA



Metro rail stations in different parts of the world for the last few decades have gone through a drastic growth. The land surrounding the world famous metrorail station has been redeveloped and is being used for multipurpose public benefits. Dhaka, the capital city of Bangladesh has entered the metrorail era recently.

We are supposed to follow the footsteps of those nations who successfully operate metro rail. Megalopolises like London, Tokyo and Los Angeles are the pioneers of this urban transportation system.

## Newsletter Highlights

- O.CREEDS Ltd



Office: ABM Asha  
House #B/160, Road #23  
Mohakhali DOHS  
Dhaka-1206, Bangladesh.



[info.bueten@gmail.com](mailto:info.bueten@gmail.com)



[www.bueten.org](http://www.bueten.org)

## FEASIBILITY STUDY\_CABLE CAR AT NAF TOURISM PARK

### TEAM O.CREEDS Ltd.

The Chittagong Division in Bangladesh features natural and hilly areas, including the longest unbroken sandy sea beach in the world. Teknaf, the southernmost point in Bangladesh, shares the border with Myanmar and is situated on the bank of the Naf River. The Naf Tourism Park, a proposed economic zone in Jaliardwip, Cox's Bazar, is the first exclusive tourism park in Bangladesh. The park will be located on an egg-shaped island with a hill and river view, offering a variety of attractions such as a theme cruise, 5 star hotel, restaurant, honeymoon park, multi-formatted food court, and more. The park will also feature a mini golf course, light and sound show, entertainment zone, infant swimming pool, cable car, sky bridge, oceanarium, water sports complex, game parlors, bird watching tower, harbor bridge, and hanging bridge. A feasibility study by ONUSHANDHANI CREEDS LIMITED has found the project economically and financially viable, recommending its implementation.



BEZA is responsible to execute this project Construction of Cable Car at Naf Tourism Park. At present, the route is Ne-Taung Hill to Naf Tourism Park (9.5km), after the construction of the Cable Car tourist attraction will increase in this area. As a result, this project will have a positive impact on overall economic development and at the same time, it will play an important role in promoting national tourism and improving the living standard of the locals.





## THE WASTE-TO-ENERGY PROJECT: A JOINT INITIATIVE TOWARDS A NEW ERA IN ENERGY EFFICIENCY

### TEAM O.CREEDS Ltd.

Bangladesh is turning to "**Waste to Energy**" for tackle waste management and generate renewable energy, aligning with their plan to diversify energy sources and reduce reliance on fossil fuels. Bangladesh's local government consists of urban and rural authorities, with waste management primarily handled in urban areas. The Bangladesh Power Development Board (**BPDB**) plans to establish a Waste-to-Energy facility in the Keraniganj and Nawabganj Upazilas and Dohar Municipality, within the Dhaka District. A collaboration with German organization **GIZ** Bangladesh is underway, with Onushandhani Creeds Ltd. (**O.CREEDS Ltd.**) and **FICHTNER** appointed to conduct the study and design efficient technologies for Waste-to-Energy projects.

O.CREEDS Ltd. conducted a survey on waste generation in various sectors, revealing that Dohar Municipality has proper waste management facilities, while Nawabganj Upazila lacks proper facilities. Keraniganj, with private sector cooperation, faces challenges like narrow roads, slow collection, and illegal disposal sites.



The study found that organic matter dominates, followed by plastic, textiles, and paper. Currently, Dohar Municipality transports 26% of its generated waste, while Keraniganj Upazila transports 0.6%. The study by O.Creeds Ltd analyzed waste samples from dumping sites and transfer stations in Bangladesh, revealing minimal variation in moisture content between wet and dry seasons. The study suggests that 1 MW of power can be generated from 106 MT of waste daily, requiring at least 300 MT of waste input. A proposed waste collection plan aims for 348 MT daily, with 70% for Keraniganj Upazila, 20% for Nawabganj Upazila, and 90% for Dohar Municipality. The plan includes additional vehicles and workforce expansion. A proposal to establish a Waste-to-Energy plant in the Suvaddya Union of Keraniganj has emerged, as per Bangladesh's Solid Waste Management Rules 2021. The study highlights the need for enhanced waste management in urban areas like Keraniganj and Nawabganj, which have a substantial population connected to the capital city.



**TOUR GROUP BD**



Tour Group Bangladesh belongs to those who have an affection for traveling. We would be delighted to provide support to those who really love to roam around, no matter where the destination is! Let's discover home first & then the earth! Welcome to visit Bangladesh, a land of rivers, high lands with evergreen fields and forests, longest sea beach of the World and many more! Bangladesh is very promising tourism friendly place! It's not only for the exquisite nature but also for the amicable and hospitable.



**SINDABAD TORI , TANGUA HAOR**



**SHURJOSNAN TWIN BEACH RESORT, SAINT MARTIN**



**BANABASH ECO VILLAGE , SUNDARBAN**



**TILAGAON ECO VILLAGE , SREEMANGAL**

**For booking any resort & services please visit our website - <https://www.resortsbd.com/>**

**in** <https://www.tourgroupbd.com/about>  
**f** <https://www.facebook.com/TourgroupBd>  
 01840238946  
<https://www.tourgroupbd.com>  
 20/5, West Panthapath(3rd Floor), Dhaka 1205



Connecting BUETian  
Entrepreneurs for their  
success and making a  
greater impact for  
Bangladesh economy.